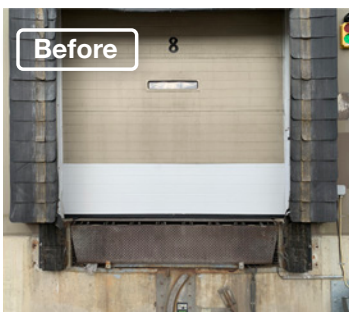
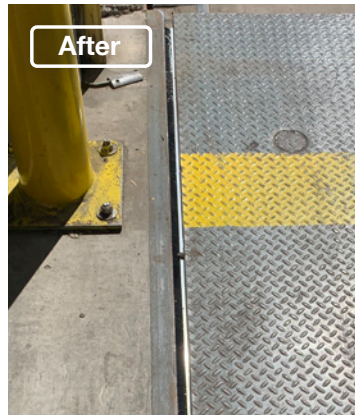




Brush Weather Seal for Dock Levelers & Steel Face Dock Bumpers
Saputo Dairy Products Canada Riverway GP

Calgary, AB



Project Overview

The Saputo Dairy in Calgary Alberta was having constant issues with the dock brush getting bent and torn. After calling Northern Dock Systems, we discovered that that the previous service provider has installed the incorrect brush weather seal. The brush that has been installed was too long and thick for this application, which is why it was getting bent and torn.

To make things right, we installed the proper sized [dock brush weather seal](#) to keep out rodents, pests, dirt, dust and other potential food contaminants. As a result, their docks are fully sealed and food audit-ready.

During the inspection of their dock levelers, we also discovered old and worn laminated door bumpers. These worn-out dock bumpers posed a risk of further damaging their dock seals and were allowing white light to enter this food manufacturing plant.

Therefore we installed new [steel face dock bumpers](#). The bumper's steel face is designed to extend the life expectancy of the dock bumper overall, even with frequent impacts. Additionally, its floating faceplate provides a large, low friction surface to better handle impact while plated rods provide additional protection against impact around loading docks.

✓ Operational efficiency

✓ Workplace productivity

✓ Tight seal

✓ Extend equipment lifespan

✓ Improve safety

✓ Prevent hazards

Featured Products

[Brush Weather Seal](#)



[Steel Face Dock Bumper](#)

